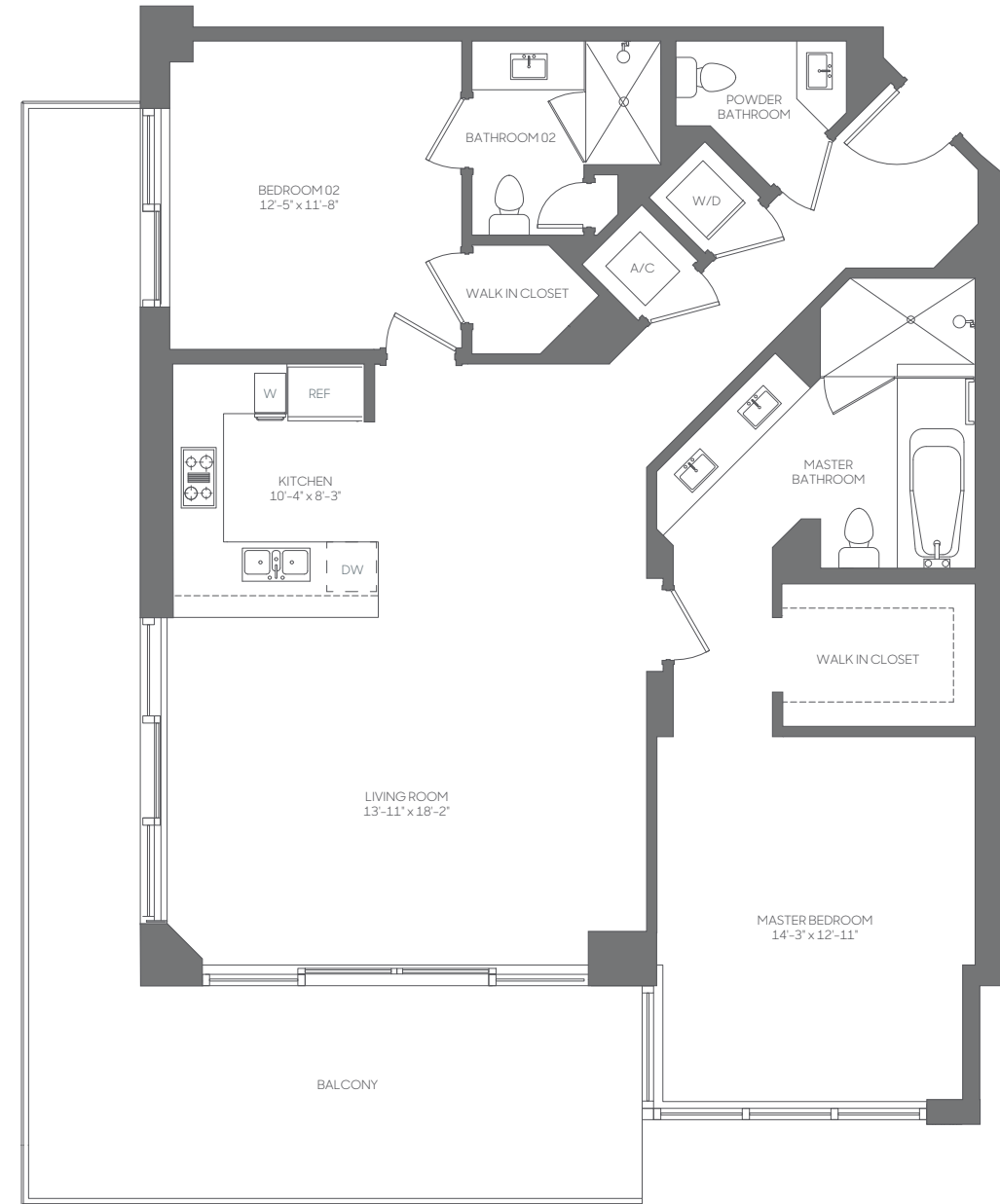
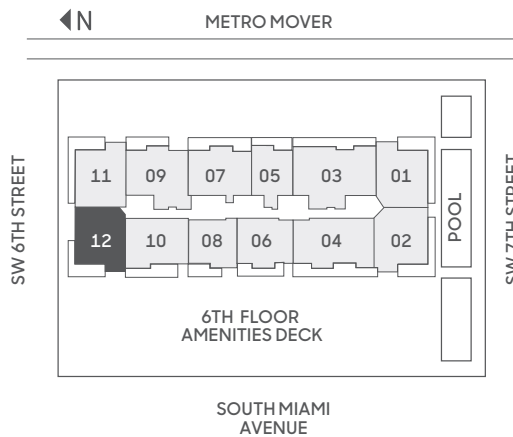




12
LINE

2 BEDROOMS | 2.5 BATHROOMS
FLOORS: 7-12, 14-36

RESIDENCE (7-12, 14-20)	1,400 sq. ft.	130 sq. mt.
RESIDENCE (21-32)	1,391 sq. ft.	129 sq. mt.
RESIDENCE (33-36)	1,385 sq. ft.	128 sq. mt.
BALCONY	280-411 sq. ft.	26-38 sq. mt.
TOTAL	1,665-1,802 sq. ft.	154-167 sq. mt.



Stated dimensions are measured to the exterior boundaries of the exterior walls and the centerline of interior demising walls, including common elements such as structural walls and other interior structural components of the building, and in fact vary from the dimensions that would be determined by using the description and definition of the "Unit" set forth in the Declaration (which generally only includes the interior airspace between the perimeter walls and excludes interior structural components). For your reference, the area of the Unit, determined in accordance with those defined unit boundaries, is 1,265 square feet. Note that measurements of rooms set forth on this floor plan are generally taken at the greatest points of each given room (as if the room were a perfect rectangle), without regard for any cutouts. Accordingly, the area of the actual room will typically be smaller than the product obtained by multiplying the stated length times width. All dimensions are approximate and may vary with actual construction, and all floor plans and development plans are subject to change. The size and configuration of balconies and terraces varies throughout the building. The balcony depicted above is among the larger balconies and is not reflective of the actual size or configuration of the balcony for each unit of this unit type. For the actual size and configuration of the balcony for your unit, see Exhibit "2" to the Declaration of Condominium. See legal disclaimer on back cover.